

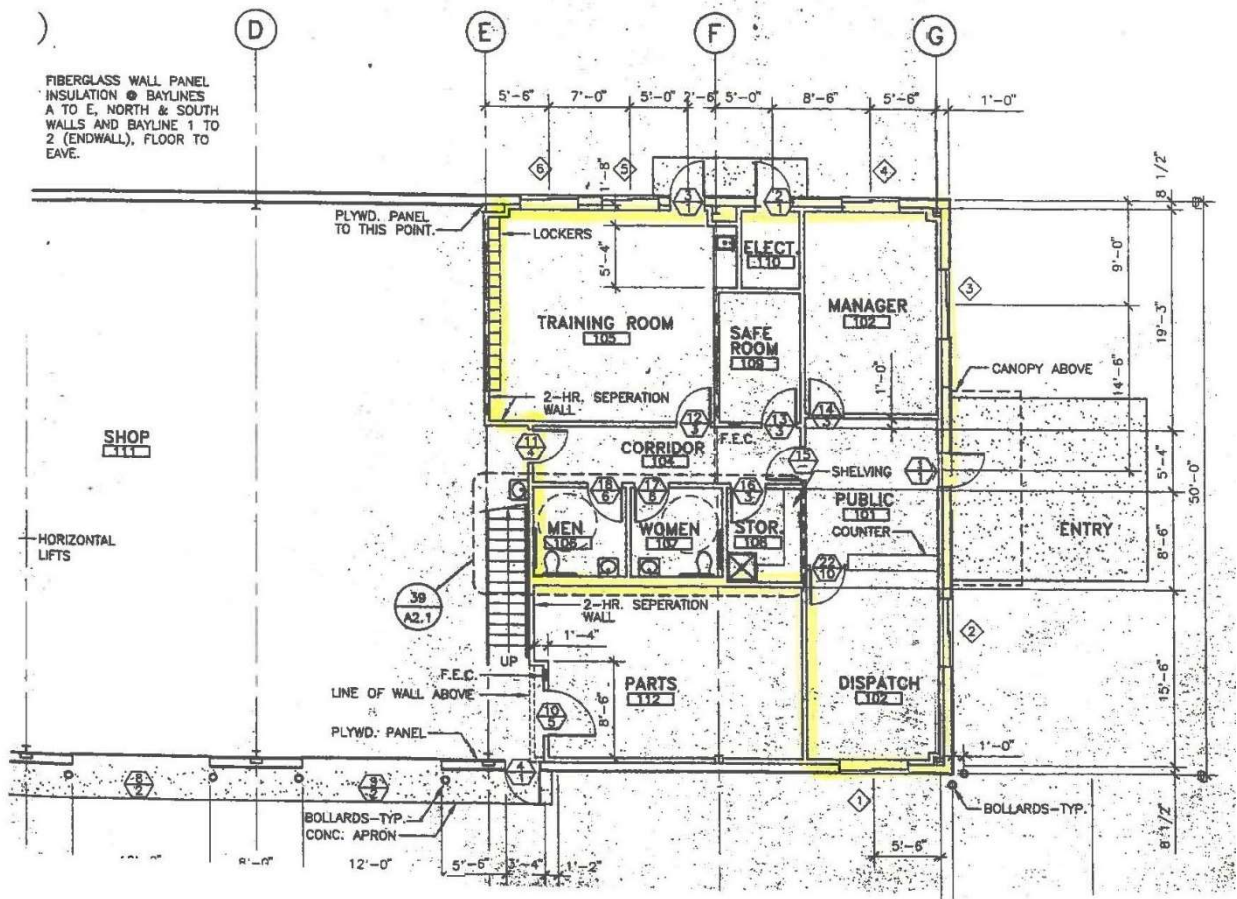
## Updated Appendix C: LTA Vehicle, Facility, and Equipment List

### County Express and Specialized Transportation Vehicles

Number	Service	Last 5 VIN	Make, Model	Number Seats	Fuel
46	County Express	05654	2008 Ford Cutaway	12A/2WC	Gas
47	County Express	01405	2008 Ford Cutaway	12A/2WC	Gas
48	County Express	01432	2008 Ford Cutaway	12A/2WC	Gas
53	County Express	10017	2008 Starcraft Allstar	12A/2WC	Gas
55*	County Express	56588	2007 Blue Bird	23A/2WC	Diesel
57*	County Express	03123	2008 Glaval	28A/2WC	Diesel
59	County Express	01823	2010 Starcraft	14A/2WC	Gas
60	County Express	01785	2010 Starcraft	14A/2WC	Gas
61	County Express	59589	2013 Starcraft	12A/2WC	Gas
64*	County Express	M1409	2013 Glaval	28A/3WC	Diesel
65	County Express	55154	2016 Glaval	16A/2WC	Gas
66	County Express	55136	2016 Glaval	16A/2WC	Gas
67	County Express	55144	2016 Glaval	16A/2WC	Gas
68	County Express	55140	2016 Glaval	12A/2WC	Gas
69	County Express	C3099	2016 Glaval	32A/2WC	Diesel
70	County Express	C3100	2016 Glaval	32A/2WC	Diesel
71	County Express	02737	2018 Starcraft	12A/2WC	Gas
72	County Express	04298	2018 Starcraft	12A/2WC	Gas
73	County Express	02743	2018 Starcraft	12A/2WC	Gas
737*	County Express	61432	2013 Dodge Caravan	5A/1WC	Gas
733	Specialized Transportation	01408	2008 Ford Starcraft	12A/2WC	Gas
735	Specialized Transportation	84647	2010 Glaval	16A/2WC	Gas
736	Specialized Transportation	96624	2010 Braun Entervan	5A/1WC	Gas
738	Specialized Transportation	62867	2013 Ford Starcraft	16A/2WC	Gas
62	Specialized Transportation	61431	2013 Dodge Caravan	5A/1WC	Gas
63	Specialized Transportation	17477	2013 Dodge Caravan	5A/1WC	Gas

\* = backup vehicle

**County Express Facility Floor Plan**



**County Express and Specialized Transportation Radio Equipment**

*County Express and Specialized Transportation:* Kenwood NX-700 base station with “push-to-talk” radios in each vehicle with automatic digital ID feature.

*County Express Only:* Vehicle location and tracking software using “push-to-talk” GPS location via Google Maps. Software allows remote monitoring capability for emergency situations.

## County Express Telephone System

1	Toshiba Strata CIX40 Digital R3 Software 6.1 Telephone System. Equipped with 4 caller ID capable central office lines, 16 digital telephone ports. Equipped to integrate with 4 digital ports of automated attendant/voice mail plus 1 port(s) available for connection of analog devices. System also equipped with Network Interface Card providing one circuit for 100 base-TX Ethernet LAN Connection for FIX WinAdmin, Maximum capacity of 40 ports
1	Toshiba CIX 40 voice processing system with automated attendant and voicemail. Equipped with 4 digitally integrated ports, approximately 40 hours of storage or up to 10,000 total messages and 374 mailboxes
4	Analog Loop/Ground Start Central Office Ports with Caller ID
8	Digital Station Ports, support for connection of NEC Univerge DT300 Series Terminals, NEC DTR-Dterm I Terminals, and NEC DTH-IPK II Terminals
4	Toshiba 20-Button Digital Key Telephone (DP5132-SD) with 4-line Backlit LCD display, voice announce, handsfree answerback, LED message waiting indication, electronic volume and tone controls, half-duplex speakerphone capability and built-in headset interface
2	Jabra Wireless Headsets with 325' range and electronic hookswitch eliminating the need for lifters to answer and disconnect calls while away from desk

## County Express RouteMatch Dispatching Software and Hardware

### Software: Paratransit Data Management Modules

- Admin/Settings Module
- Customers Module
  - Data Import
- Funding Sources Module
- Addresses Module
- Trips Module
- Scheduling Module
- Dispatching Module
- Services
  - Billing Module
- RouteMatch Billing Engine
- Verification Module
- Reporting Module
- Drivers Module
- Vehicles Module
- Mobile Data System Module

### Hardware

Quantity	Description	
17	Samsung Galaxy Tablet, 8-inch	
One (1)	Dell Optiplex 3010	
	Processor	3rd Gen Intel Core i5-3470
	Memory	8GB, NON-ECC, 1600 MHZ DDR3
	Video Card	Intel 174, Integrated Graphic w/Single HDMI/VGA
	Hard Drive	250GB 3.5" SATA 6Gb/s with 8MB
	CD-ROM/DVD-ROM	8X DVD+/-RW, Slimline
	Speakers	AX510 Black Sound Bar
	Monitor	Dell Professional P2412H 24-inch Widescreen Flat Panel
	Operating System	Windows 7 Professional
	Software	Microsoft Office Professional 2010
	Keyboard	Dell Multimedia with Hot Keys
Mouse	Dell MS111 USB Optical	
One (1)	Lenovo TS440	
	Operating System	Windows Server 2008
	Database Software	Microsoft SQL Server 2012
	Processor	Intel Xeon 3.3 Ghz
	Network Adapter	Broadcom 5720 DP 1 Network interface Card (2)
	Memory	8GB RDIMM (2)
	RAID Configuration	Raid 0
	Hard Drive	1.2 TB (3)
	Internal Optical Drive	DVD
	Power Supply	Dual, Redundant Power Supply
	Memory DIMM Type and Speed	1333 MHz RDIMMS
	Speakers	AX510 Black Sound Bar
	Monitor	Dell Professional P2412H 24-inch Widescreen Flat Panel
	Keyboard	Smart Card Reader USB
Mouse	Silver Storm Optical	